

ART OF THE AUSTRONESIANS

The Legacy of Indo-Pacific Voyaging

Fowler
MUSEUM AT UCLA

April 24-August 28, 2016

For more information, please contact: Rowanne Henry, Director of Communications and Engagement, 310/825-4288, rowanne.henry@arts.ucla.edu



1. Architectural panels, Paiwan peoples, Taiwan, early 20th century. The H. P. and J. F. Ullman Collection, Fowler Museum at UCLA.



2. Malagan display mask, Northern New Ireland, Papua New Guinea, probably 19th century. Collection of Valerie Franklin.



3. Ceremonial textile (detail), Lampung peoples, Lampung, Sumatra, Indonesia, radiocarbon dated 1652-1806. Collection of Thomas Murray.



4. Canoe prow ornament, New Georgia, Solomon Islands, probably 19th century. Collection of Edward and Mina Smith.



5. Granary façade, Sa'dan Toraja peoples, Tondon, South Sulawesi, Indonesia, early 20th century. Gift of Dr. and Mrs. Robert Kuhn, Fowler Museum at UCLA.

ART OF THE AUSTRONESIANS

The Legacy of Indo-Pacific Voyaging

April 24-August 28, 2016

Fowler
MUSEUM AT UCLA

For more information, please contact: Rowanne Henry, Director of Communications and Engagement, 310/825-4288, rowanne.henry@arts.ucla.edu



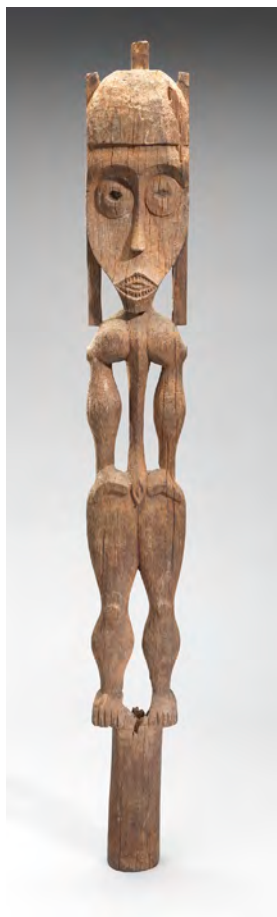
6. Canoe, Yami peoples, Botel Tobago Island, Taiwan, mid-20th century. Anonymous Gift, Fowler Museum at UCLA.



7. Ceremonial dagger handle, Javanese peoples, Java, Indonesia, 16th-17th century. Collection of John and Oron Strusinski.



8. Boat-shaped funerary marker, Bajau peoples, Sulu Archipelago, Philippines, 19th to early 20th century. Gift of Eli Ballan, Fowler Museum at UCLA.



9. Memorial figure, Bahau peoples, Mahakam River, East Kalimantan (Borneo), Indonesia 19th or early 20th century. The Jerome L. Joss Collection, UCLA Fowler Museum.



10. Door guardian from a chiefly house, New Caledonia, 19th century. Gift of the Wellcome Trust, Fowler Museum at UCLA.

ART OF THE AUSTRONESIANS

The Legacy of Indo-Pacific Voyaging

April 24-August 28, 2016

Fowler
MUSEUM AT UCLA

For more information, please contact: Rowanne Henry, Director of Communications and Engagement, 310/825-4288, rowanne.henry@arts.ucla.edu



11. Ceremonial textile, Sa'dan Toraja peoples, South Sulawesi, Indonesia, probably first half of 20th century. Gift of E. M. Bakwin, Fowler Museum at UCLA



12. Red feather currency, Santa Cruz Islands, Solomon Islands, mid-20th century. Gift of Bennet Mermel, Fowler Museum at UCLA.



13. Ancestor figures, North Nias, Indonesia, collected before 1907. Gift of the Wellcome Trust, Fowler Museum at UCLA.



14. Horse for spirit-possession dance, Javanese peoples, Wonosobo, Central Java, Indonesia, late 20th century. Gift of Susan P. Fuller, Fowler Museum at UCLA.



15. Deity figures, Balinese peoples, probably Sanur, Bali, Indonesia, 1930s or earlier. The Katharane Mershon Collection of Indonesian Art, Fowler Museum at UCLA.